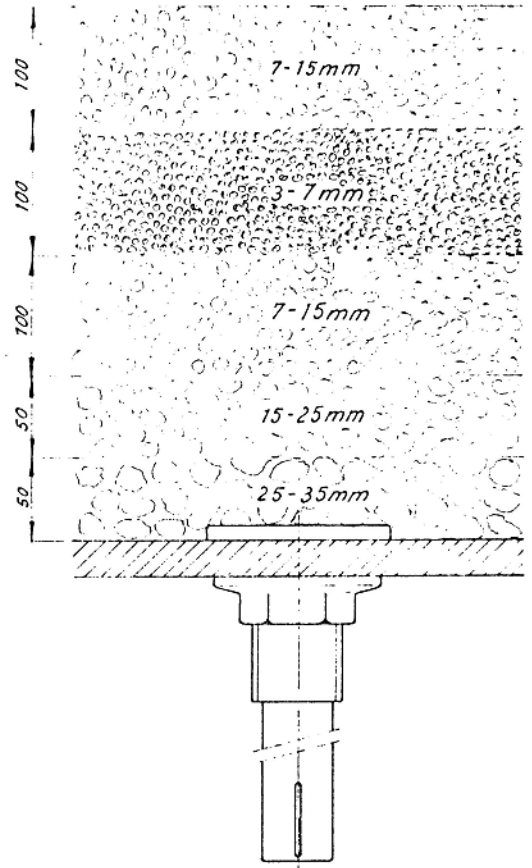
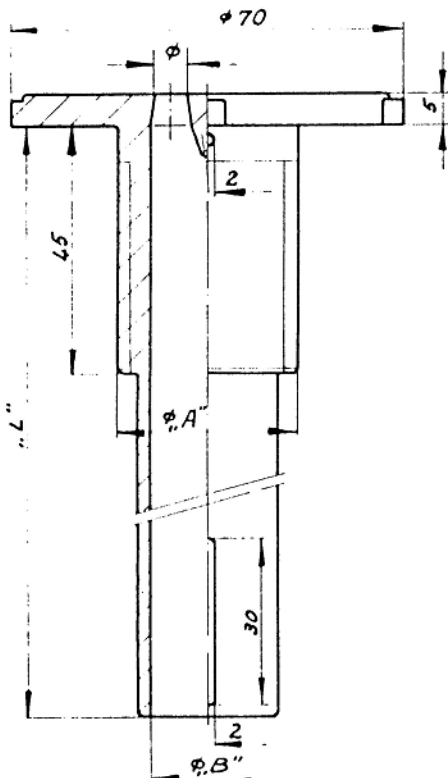


Filter-nozzles for the first stage (are resistant to contamination and can be cleaned without dismounting from the bottom).

TYPE F1



$\phi$ 4 x	$\phi$ 5,2 mm = 85 mm <sup>2</sup>	$\phi$ 7,5 mm = 176,7 mm <sup>2</sup>
Thread :	M 24	1 1/4" WW
A $\phi$ mm	24	32
B $\phi$ mm	16	21
Shaft (L)	45, 80, 110, 140, 200, 220, 250 mm  or on request	